

MAUSOLUS

THE NEWSLETTER OF THE MAUSOLEA & MONUMENTS TRUST

WINTER 2013

The Mausolea & Monuments Trust
70 Cowcross Street
London EC1M 6EJ

The Larnach Mausoleum of 1881 by R.A. Lawson, in Dunedin, New Zealand, which has been restored by the Historic Cemeteries Conservation Trust of New Zealand

Patrons

Professor James Stevens Curl

Tim Knox

Honorary Secretary

John St. Brioc Hooper

Chairman

Carolyn Cocke

Trustees

Alexander Bagnall

Carolyn Cocke (Membership Secretary)

Tim Ellis

Piers Feltham

Jerzy Kierkuc-Bielinski

Robert Heathcote (Treasurer)

Roger Bowdler

Ian Johnson

Hannah Parham

Gavin Stamp

Charles Wagner

Mausolus is published twice a year by the Mausolea & Monuments Trust. All contents © MMT 2013 except where otherwise indicated.

Members and others are warmly encouraged to contribute photos, news and features to:

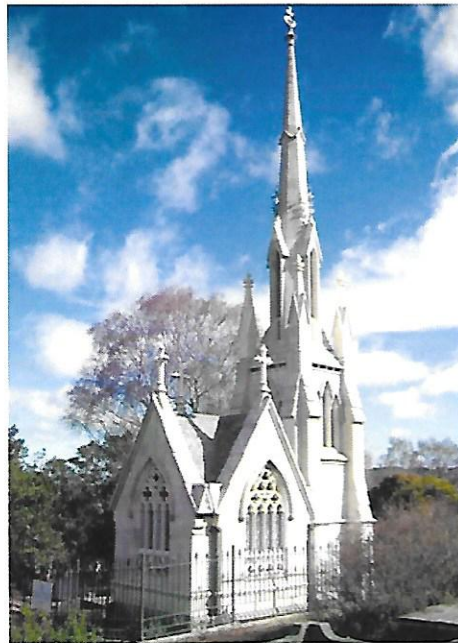
Ms. Hannah Parham

12 Devonshire Street, London, W1G 7AB

hannah.parham@insall-architects.co.uk

A Luminary of Dunedin

Hannah Parham



William James Mudie Larnach (1833-1898) was a banker, businessman, politician and government minister.^[1] He is famous for having built one of New Zealand's grandest historic houses – The Camp (now known as Larnach Castle) on Otago Peninsula in the early 1870s. And he also built this fantastical mausoleum, as a memorial to his first wife Eliza Jane Guise who died suddenly of a stroke on 8 November 1880. Ultimately, the tomb came to be occupied by five members of the Lanach clan – including William himself – all of whom suffered untimely deaths.

Larnach was born on in New South Wales, Australia, son of a station owner. He had brief experiences of gold-digging and farming before turning to banking and, in 1866, taking on the general management of the Bank of Otago

in Dunedin, New Zealand. Larnach invested heavily in land speculations and a timber venture. His fortunes, however, went through several cycles of boom and bust. With every bust came a foray into politics, which became an outlet for his restless energies.

Criticised for mismanagement, Larnach resigned from the Bank of Otago in 1873. By 1875 he was elected representative for the City of Dunedin. As a public figure Larnach was known for his practical jokes around Parliament, his 'robustious egotism' and 'rough and blundering modes of speech'. He could descend from his usual haughtiness and 'address the plebs in their vernacular'. Yet Larnach had little love for politics, and looked upon business as his true calling.

Larnach participated in many commercial ventures in Dunedin but an influential segment of Dunedin society regarded him with suspicion, even hostility. A trip to Britain in the 1870s attracted the opprobrium of his fellow New Zealanders, as Larnach sold agricultural land plagued by rabbits at an inflated price. On his return to Dunedin in 1881, his farming enterprises collapsed and falling land prices revealed the folly of his ambitious land speculations. Larnach lost £60,000 when his timber company was declared insolvent.

He did, however, have sufficient funds to commission this extravagant Oamaru stone mausoleum in Dunedin's Northern Cemetery to house the body of his wife. The Gothic structure was designed by the notable Dunedin architect R. A. Lawson in 1881. It is in essence a miniature version of the First Church of Dunedin,

Postcard from Cobham - Roger Bowdler

We had a good visit to the Darnley Mausoleum at Cobham, in Kent, in September. This long-running conservation saga is nearing its long-anticipated conclusion: transfer to the National Trust. Discussions over transfer from Gravesham Council are in the final stages and - touch wood - the building will be opened regularly from the new year. Amazing progress has been made in terms of managing the long-neglected parkland, and the transformation is well worth seeing for yourselves. It's a very special building in a very special place.



also by Lawson. It became the Larnach family tomb. A year later Larnach married his late wife's half-sister, Mary Cockburn Alleyne and when she died of blood poisoning after an operation in 1887, she too was laid to rest in the new mausoleum. Likewise entombed was Larnach's eldest daughter, Kate Emily, who died of typhoid in Wellington in 1891.

Larnach was appointed minister of mines in 1885 and in this capacity he conducted an inspection of mineral resources around the country, his travels punctuated by acts of bravado and feats of horsemanship. Larnach was an athletic rider who could spend twelve hours in the saddle without food. He established schools of mine management and edited a comprehensive survey of the mining industry.

By the mid-1890s Larnach's wheel of fortune was turning again, and at greater speed. Having lost his seat in Parliament in 1890, he regained power in 1894. Although his finances remained weak, he acquired shares in the Colonial Bank of New Zealand and rejoined its directorate. His confidence in the bank was misplaced, however, and the Colonial foundered in 1895. It was apparently this misfortune, and persistent rumours of an affair between his third wife and his son Douglas, which led Larnach to commit suicide at Parliament on 12 October 1898.

Larnach was interred in his mausoleum, later to be joined by his eldest son, Donald Guise Larnach, who committed suicide in 1910. Larnach died intestate and the scattered family was torn apart by legal battles over what little remained of his property.

The tomb fell into disrepair and suffered years of vandalism. The decay was stopped in the 1990s, with rescue work to make safe the spire, but it wasn't until earlier this year that funds for a full restoration were raised.

Research was undertaken into the original form of the mausoleum by heritage consultant Guy Williams. One of the most significant finds was the cartoons of the glass in the windows. With the help of a descendant of J. L. Salmond, a business partner of the original architect R.A. Lawson, stained glass artist Peter Mackenzie found about a dozen previously unknown tomb drawings, including the window cartoons, in the firm's archives. Mackenzie said: 'Historically

there had been many reports done on this building but they all referred to one drawing, a proposal put to Larnach, but that wasn't what was built. It was modified at least four times, probably five, before they settled on the design. It became more elaborate, grander and larger, with a taller, finer spire and grander windows and ornaments, much like everything Larnach did'.

Reconstructing the stained-glass designs in detail took detective work, including an archaeological dig last summer which involved sifting broken glass from soil around the tomb to identify

colours, shapes and patterns, and analysing old photographs, and drawings. The windows now show heraldic devices of Larnach and his related families, and his award of the order of St Michael and St George. The restoration has included entirely new replica finials and crosses, window tracery and joinery details. It was undertaken by the Historic Cemeteries Conservation Trust of New Zealand.

[1] - Biographical detail is taken from F. R. J. Sinclair, 'Larnach, William James Mudie', from the Dictionary of New Zealand Biography.



A Tragic Tableau

Angela King and Hannah Parham



Instead, my grandmother Helena - older, married and living in London - played matchmaker. Letizia met and married Gaetano Melesi. It was to be an unhappy marriage.

Both sisters were very close. A few days before Letizia's death they visited a fortune teller. The woman refused to tell Letizia's fortune and insisted on refunding her fee. Both my great aunt and my grandmother had thought this very amusing. Later that week, they both went to confession. As they came out of church, Letizia said goodbye to Helena, turned and fell and was run over by the taxi.

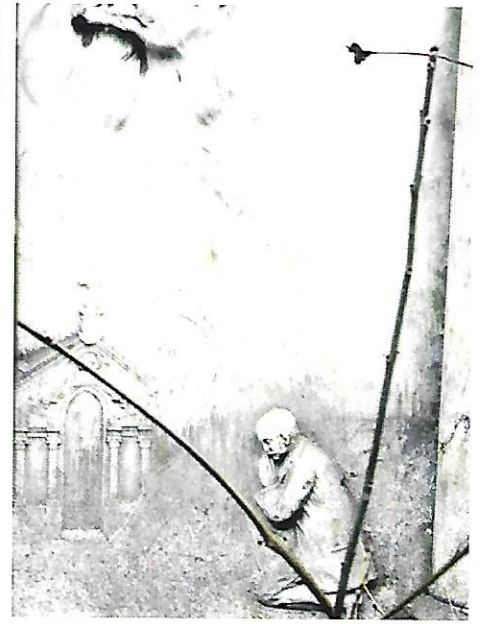
My mother said Letizia had a magnificent funeral with black horses wearing white plumes and a black carriage with a mass of wreaths on top. I think looking at the mausoleum it was believed that she went straight to heaven. She appears to be borne aloft by angels. As she'd just been to confession she would be in a state of grace and free from sin.

In July this year, the Melesi Mausoleum in St Pancras and Islington Cemetery in London was listed at Grade II. This is principally for its early and distinctive sculptural panels, which depict the fatal motor vehicle accident that resulted in the death of a young woman, Letizia Melesi, in 1914.

The Melesi mausoleum was erected in 1922 by Gaetano Melesi in memory of his wife. She had been killed by a taxi in a road accident in London on 11 January 1914, aged 35. The depiction of the road accident on the mausoleum is very unusual and is likely to be among the earliest examples on a funerary monument, despite the first recorded death in Britain of a pedestrian by a petrol-driven motor vehicle occurring in Crystal Palace in 1896. Several other memorials relating to motor accidents have been listed including that to Percy Lambert, a racing driver killed at Brooklands racetrack in 1913, whose memorial in Brompton Cemetery bears a carving of a wheel with broken spokes, and that in Reading Cemetery to world-record holder Bernard Hieatt. The latter is depicted in motor racing uniform, having been killed in 1930, also at Brooklands, within a few laps of victory in a motorcycle and sidecar race.

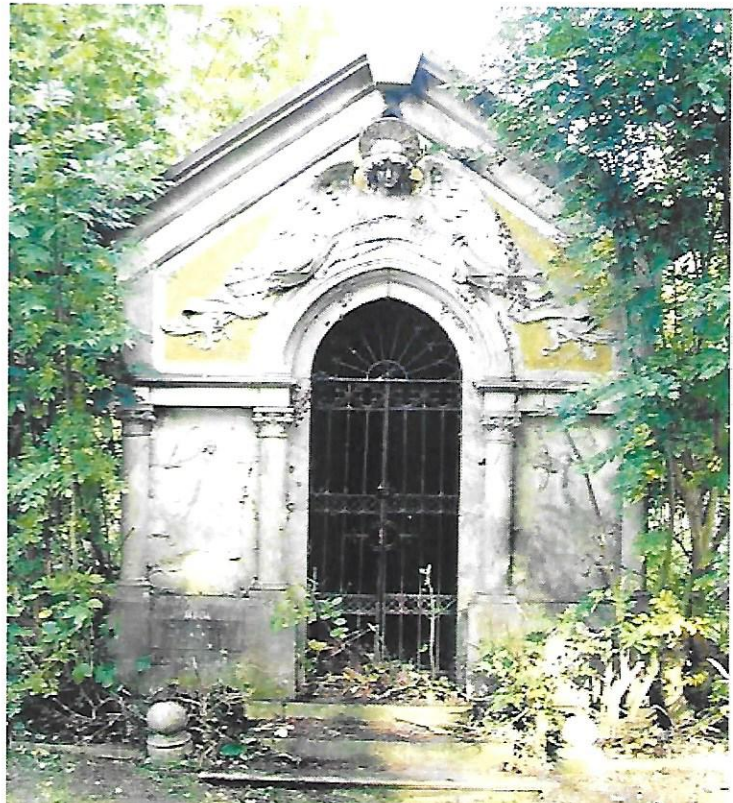
One of the Trust's members, Angela King, is a descendant of Letizia Melesi. The story of Letizia's life and death are remembered by the family. Angela writes:

My great aunt Letizia Sessarego was born in what was then Queenstown (Cobh) Ireland. Her mother was Hannah Murphy and her father Giuseppe Sessarego. He had come from a little village near Genoa and was on his way to New York to find work. The ship stopped en route, as they did, in Queenstown, he met my grandmother and so went no further. They had numerous children, Letizia being one of them. Letizia fell in love with a sea captain but his mother objected - Sessaregos were classed as foreigners!



The mausoleum stands in the Roman Catholic section of St Pancras and Islington Cemetery on the north side of Roman Road in East Finchley. It is designed in the neo-classical style with Gothic elements. The pointed entrance arch, reached via two steps, has marble engaged columns with foliated capitals and elaborate wrought-iron gates; identical columns frame the sides. To either side of the entrance are marble relief panels: that to the left depicting a taxi with a driver with arms outstretched, the prostrate figure of Letizia Melesi and an angel pointing heavenwards; that to the right depicting Gaetano Melesi kneeling before the memorial while his wife ascends to heaven in

the arms of the Holy Spirit accompanied by three winged cherubs. Below the left-hand panel the plinth is inscribed with lead lettering reading: IN AFFECTIONATE REMEMBRANCE/ OF/ LETIZIA/ DEARLY BELOVED WIFE OF GAETANO MELESI/ DIED JANUARY 11th 1914/ AGED 35 YEARS/ HER VIRTUES ARE RECORDED IN THE HEART/ OF THOSE TO WHOM SHE WAS KNOWN. The tympanum is faced in gold mosaic. Above the arch is a relief sculpture of a winged angel with a mosaic halo, holding a swag with the Melesi name. The gable has a keystone developed as a plinth bearing a Celtic cross, and antefixae to the angles. The interior has a relief of the Madonna and Child over the altar.



Yuletide Mystery

Kate Harwood

Hertfordshire Gardens Trust has recently rediscovered a remarkable mausoleum, erected in a small wood near St Albans for Sir David Yule, who was reputed to be the richest man in the Empire when he died in 1928. Sir David was part of the great Yule manufacturing empire in India and the tomb has reliefs of his jute mills and plantations round the base. It takes the form of an office chair and desk and includes an inscription from Rudyard Kipling's *The Jungle Book*.

Go to your work and be strong, halting not
in your ways,
Balking the end half-won for an instant dole
of praise.
Stand to your work and be wise -- certain of
sword and pen,
Who are neither children nor Gods, but men
in a world of men!

English Heritage is considering the mausoleum for listing, but the name of the sculptor remains a mystery. Can anyone help with the attribution? Please contact Kate Harwood of the Hertfordshire Gardens Trust c/o hannah.parham@insall-architects.co.uk if you can.



The North Mausoleum at Church of St Andrew, Little Glemham, Suffolk

Hugh Richmond



This note has resulted from the decision of the Parochial Church Council of Little Glemham to repair the roof and the vaulted ceiling of the mausoleum and the adjoining roofs of the chancel. They were damaged by a flying bomb that exploded in a field east of the church. Several V2s were fired at Norwich & Ipswich in September 1944 from Holland.^[1] The subsequent repairs have aged and require further attention.

The proposed programme of repair has received a grant from the Heritage Lottery Fund under the Repair Grants for Places of Worship in England scheme, which is administered by English Heritage. The work will be carried out under the direction of Nicholas Warns Architects Ltd. of Norwich. The exploratory phase of the contract was undertaken in May 2013 when the structure of the mausoleum and the history of the building were investigated.

The ownership of the Glemham Estate and the history of the mausoleum are interlocked. There is a reference to William de Glemham in 1228-29^[2] and the estate remained with his family until 1708-09. The present Glemham Hall was built in c.1561.

In 1708-9 the estate was sold to heirs of Sir Dudley North (1641-1691) who made a fortune as a merchant in the Levant and later became a prominent politician and economist.^[3] It remained with the family until 1789 when Ann

Herbert (nee North) bequeathed it to her nephew Dudley Long on condition that he changed his name to North. Dudley Long North was a man of fortune and a prominent politician.^[4] He died without an heir in 1829 and the estate reverted to the North family, becoming the property of the 8th Earl of Guilford.

At first sight it would appear that the mausoleum is the creation of Dudley Long North but evidence has been found to show that there was an earlier mausoleum on the site and that it is possible that the present burial vault was part of this structure.

There is a fine set of 18th century monuments to the members of the North family in the chancel and reference is made to a vault on the monument of Catherine North who died in 1715.

An unsigned architectural drawing of the church forms part of the Parish archive in the Suffolk Record Office.^[5] It shows the church before restoration^[6] with a classical interior. There is a compartment on the north side of the chancel. It is 18 feet square and has walls 1 foot 2 inches thick, indicating that it was built of brick. The north wall is plain and has a gable. There is a square-headed three light window in each of the sidewalls and a doorway at the north end of the west wall. The floor of the room is 2 feet higher than that of the church and the ceiling is flat. The interior is open to the chancel and furnished with pews.

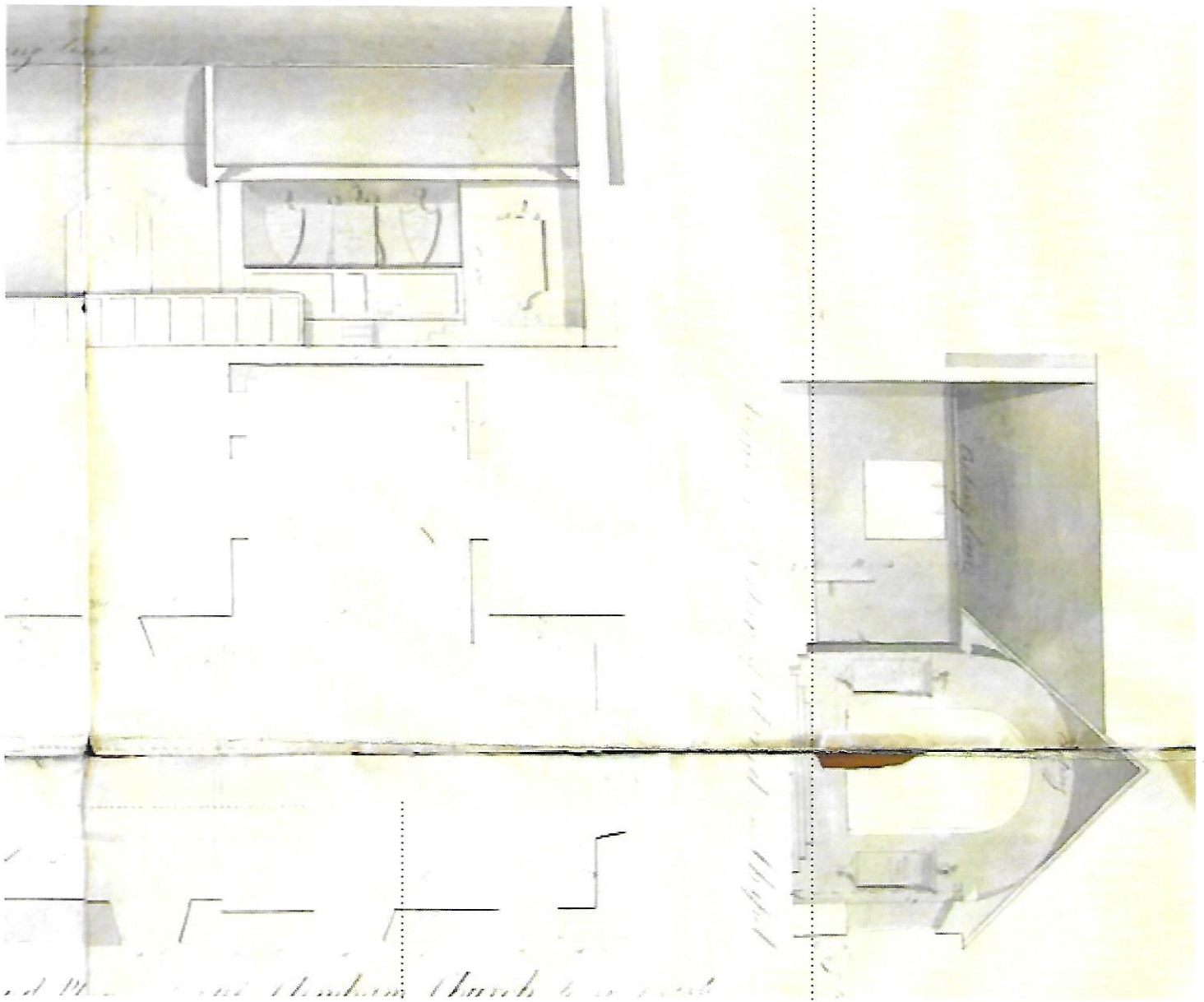
A sketch of the south side of the church on the back of the drawing shows that the chancel was faced in brick, had semi-circular headed windows and no buttresses. The architectural drawing shows the walls as 2 feet thick, a foot narrower than those of the 12th century nave, confirming that they are entirely made of brick.

Thus it would appear that the church east of the nave was rebuilt in the early 18th century by the family of Sir Dudley North to provide a suitable setting for their monuments, a vault for their mortal remains and a spacious private pew for worship.

The architectural drawing is undated but shows three monuments on the north wall of the pew that are unmistakably those on the east wall of the present compartment. They record the circumstances by which Dudley Long inherited the estate from the North family and changed his name to Dudley North Long. As he put up at least one of these monuments the drawing must be later than 1789, the year that Ann Herbert died.

The drawing is a survey of the church and perhaps it was made to show the existing context in preparation for the design of the new mausoleum desired by Dudley Long North.

It appears that Dudley Long North rebuilt the vault/pew as a mausoleum, in c.1810 (one of the lead sheets covering the apse is inscribed



Undated architectural drawing, but probably after 1789, showing three monuments on the north wall that are now on the east wall of the mausoleum, which was built c1810.

JOHN. L.B. 1810). No record of the architect has been found but it may not be coincidental that John Harvey (a little known pupil of Samuel Wyatt) was working on the interior of the library at Little Glemham Hall in 1811.^[7]

The new mausoleum consists of a rectangular compartment open to the chancel on the south and with an apse to the north. The internal dimensions of the rectangular room match the external dimensions of the earlier mausoleum, suggesting that the new building may have been constructed around the earlier burial vault. This could not be verified, as the vault was inaccessible.

The exterior of the mausoleum is in a minimal gothic style. The walls are faced with cut flint and the dressings are limestone. The plinth is plain chamfered and the parapet stands on a hollow moulded cornice. There is one small lancet window in the E. wall and a large doorway with a four-centred head fitted with outer and inner doors on the W. side. This is reached from the churchyard by a short flight of steps.

The interior is in marked contrast as it takes the

form of the sanctuary (cella) of a Greek Temple in Doric style and consists of a rectangular room with an apse to the north. Fluted Doric columns with a plain entablature frame the sides of the room and carry a barrel-vaulted ceiling with coffers and a skylight. The southern end of the compartment is open to the chancel and has an elaborate wrought iron balustrade with a timber rail set between the columns. The apse is framed by a semi-circular arch with pilasters and has a semi-domed vault. It contains a statue of the seated figure of Dudley Long North, occupying the place of the cult image. John Gibson carved the statue in Rome in 1833.^[8] The first version was lost at sea. Installation must therefore have taken place some considerable time after the death of Dudley Long North.

The other monuments in the mausoleum record the ownership of the Glemham Estate. On the W. wall are three brass plaques in stone surrounds carved as blind semi-circular headed arches with tentative classical decoration. They commemorate members the Glemham family, the earliest being that of Sir John Glemham d.1535. Opposite are the three monuments

moved from the N. wall of the earlier vault/pew (see above).

A faculty was issued in 1848^[9] granting a petition by The Honourable Sophia North to have "the erection of the said building or mausoleum and the sinking the said vault confirmed and of having the same appropriated as and for a mausoleum for the said Sophia North and the owners for the time being of the said estate called the Glemham Hall estate exclusive of all other persons whomsoever". This suggests that Dudley Long North did not obtain a faculty when he originally rebuilt the mausoleum.

[1] - C. Campbell, Target London, under attack from the V-weapons during WWII, Abacus 2012

[2] - National Archives - Calendar of Feet of Fines

[3] - Oxford Dictionary of National Biography

[4] - Oxford Dictionary of National Biography

[5] - Suffolk Record Office HB26/12056/124

[6] - The church was restored in 1857-8 under the direction of J. P. St. Aubyn.

[7] - H. Colvin, A Dictionary of British Architects 1600-1840

[8] - R. Gunnis, Dictionary of British Sculptors 1666-1851

[9] - Norfolk Record Office - Faculty 1848

A new chair and a new treasurer for the Mausolea & Monuments Trust



Roger Bowdler

Carrie Cocke

Since taking on the leadership of the MMT at short notice five years ago, Roger Bowdler has been a fine Chairman, encouraging us to stick to our core purpose of championing neglected funerary memorials, to consider the plight of monuments too, while modernising the way we reach out to our members and the wider public. Under his Chairmanship the newsletter has been transformed into Mausolus and the range of events and lectures extended.

Roger has combined his role within the MMT with a day job which is becoming ever more demanding. As Designation Director of English Heritage he is responsible for listing – a subject

guaranteed to generate strong views and time-consuming debate, whether from architects, architectural historians and a large proportion of the general public! The Trustees were thus highly sympathetic to his wish to stand down from the leadership while remaining mightily relieved that his vision, expertise and sense of humour are still to be available to the Trust.

The new Chairman, Carolyn Cocke, has been a Trustee for five years and has been involved in the MMT since its beginning, through her late husband Thomas, Roger's predecessor as Chairman. Her background is in the charitable and fundraising sectors, so she will be relying

heavily on the splendid range of academic knowledge and practical skills available through our trustees and supporters to develop the Trust's work. Of her election as Chair, Carrie said:

Mausolea range from little more than garden sheds to amazing architectural gems, but lots of them are no better than orphans, because ownership is so murky. They deserve to be better-known and cherished, and I hope we can do what we can to promote and care for them.

Roger handed over the reins to Carrie with the following valedictory:

I've very much enjoyed my years at the tiller of the MMT, and remain utterly committed to its goals of looking out for, and promoting appreciation of, our funerary architecture. Carrie has been a huge help on many fronts already, and brings great experience and energy to bear in driving forward our aims. I am pleased to continue as a Trustee, and look forward to seeing members at events in the future.

The Trustees would like to offer their warmest thanks to Carrie and Roger for their dedicated service to the Trust.

We also have a new treasurer, though again we are lucky not to lose our previous chancellor, Ian Johnson, who has nobly agreed to continue as a trustee. Ian has devoted much time and even more patience to keeping the accounts of the Trust in impeccable order and we are very grateful to him. He will be succeeded by trustee Robert Heathcote, whom we will no doubt come to be similarly indebted in time.



Lead sheet to the apse inscribed JOHN. L.B. 1810. No record of the architect has been found but it may not be coincidental that John Harvey (a little known pupil of Samuel Wyatt) was working on the interior of the library at Little Glemham Hall in 1811.