

## Pelham Mausoleum

---

A great mausoleum, considered by Pevsner Wyatt's masterpiece. The design is based on that of the Temples of Vesta at Rome and Tivoli. Twelve Doric columns, standing on the plinth formed by the rusticated burial chamber, encircle the upper chamber and support the cornice and balustraded copper dome. The entrance on the north side is approached via three linked flights of steps. Inside, placed under a central lantern with painted glass by Francis Eginton of Birmingham, is a statue of Sophia by Joseph Nollekens. The three recesses in the wall opposite the entrance, flanked by pairs of alabaster half columns, contain monuments to other members of the family: Sir William Pelham, a former Lord Deputy of Ireland (d.1587); Francis Anderson, Charles' father (d.1758); and Charles Pelham, his great-uncle (d.1763) from whom Charles had inherited Brocklesby Park. The monuments were made in Rome in the 1770s. Their authorship is a matter of speculation.

### Architect(s)

James Wyatt

### Listing

Grade I (England and Wales)

### Year Created

1787

### History

By the age of 14, having inherited both Manby Hall and Brocklesby Park, Charles Anderson-Pelham (1749-1823) was already extremely rich. He met his future wife, Sophia Aufrere (1753-86) during a Grand Tour of the continent while still in his teens. Though beautiful, Sophia had little fortune of her own and was not considered a suitable match by his friends at home. Despite this, however, Charles and Sophia were married as soon as he came of age, she being only seventeen at the time. When she died, some sixteen years later, Charles, by then 1st Baron Yarborough, built the mausoleum to contain her remains. It also houses fitting memorials to his forbears.

### Condition

Good (1997)

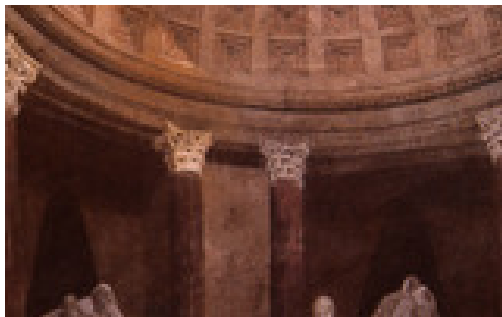
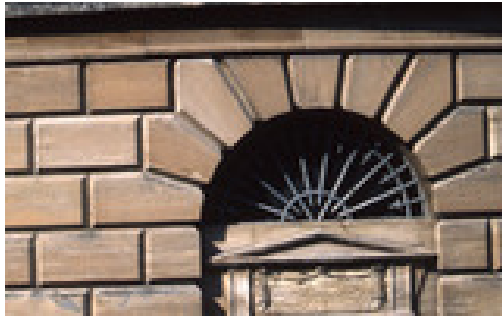
### Sources

*BoE: Lincs* (1989), 190-191;

H Colvin, *Architecture and the After-Life* (1991), 344: figs. 327-8;

John Lord, 'The building of the mausoleum at Brocklesby, Lincolnshire', *Church Monuments* (1992), 86-96.







**Location**

Brocklesby Park,  
Brocklesby,  
Lincolnshire.  
DN41 8PN